

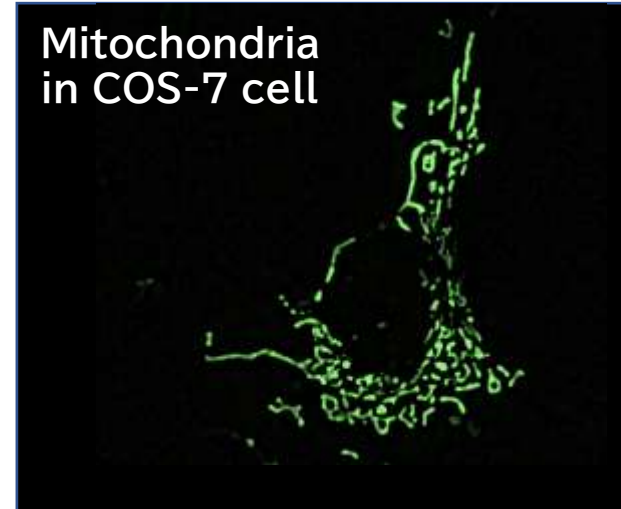


## Theme01:

**Discovery of novel aspects of mitochondria-associated genes through genetic and pharmacological interventions:** Mitochondria are research targets potentially hiding treasure troves for drug development. We are disclosing new function of some mitochondrial proteins.

N. Inoue *et al.* *EMBO Rep.* **19**, e44860 (2018)

M. Noguchi *et al.* *Cell Death. Dis.* **14**, 241 (2023)



## Theme02:

**Identification of novel physiological systems by multi-stage omics studies & genetic mutant mice:** Mutant mice exhibiting drastic phenotype are good tools to perform exploratory researches. We use transcriptome and phenome approaches for discovering novel molecules/systems regulating organisms.

C. Kawaguchi *et al.* *Commun. Biol.* **3**, 557 (2020)

